

Education Portfolio

2024



Contents

Introduction	04
About Noviun	06
How We Work	12
Meet The Team	14
Primary Schools	20
Secondary Schools	38
SEND Schools	54
Higher Education	80
The Studio	98
Awards	100



Barton Manor Free School,
Canterbury



Introduction

Welcome to Noviun Architects. As a chartered architectural practice, our commitment is to deliver designs that prioritize human experiences.

This brochure provides an insight into our approach, expertise, and the sectors we serve.

Unlike many architectural practices who focus their approach through a project architect, we bring a series of specialist designers, technologists and operations teams.

Rather than the traditional linear approach to design and procurement, we look to collaboration, where clients, contractors and consultants all play an integrated role.

The application of the latest technology and software is fundamental to the success of this collaborative way of working. Information is developed and harnessed through our BIM process and virtual reality from day one, and throughout the pre-contract and construction stages.

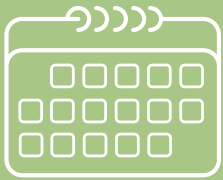
We believe this inter-active approach to design and construction is the way forward for our industry, as it strives for better quality delivered faster and within restricted budgets.





“ Our specialisms across the range of building types and sectors, and our experience and lessons learned from the construction stages and buildings in use, all inform our design process.

About Noviu



SINCE
1997



CUTTING-EDGE
SOFTWARE



RIGHT FIRST
TIME APPROACH



BIM
TECHNOLOGY



COLLABORATION



SUSTAINABILITY
6.



CHARTERED
PRACTICE



PEOPLE CENTRIC



PRO-ACTIVE
DESIGN



AWARD WINNING

Chartered Practice

Being recognised as a Chartered Practice is not just an accolade; it's a reflection of our dedication to maintaining the highest standards in architectural practice. This distinction underscores our commitment to professionalism, competence, and integrity in all our endeavors.

BIM Technology

Our adoption of Building Information Modeling (BIM) technology exemplifies our forward-thinking approach. BIM allows us to create precise virtual models, ensuring accuracy, efficiency, and collaboration from the design phase right through to construction.

Collaboration

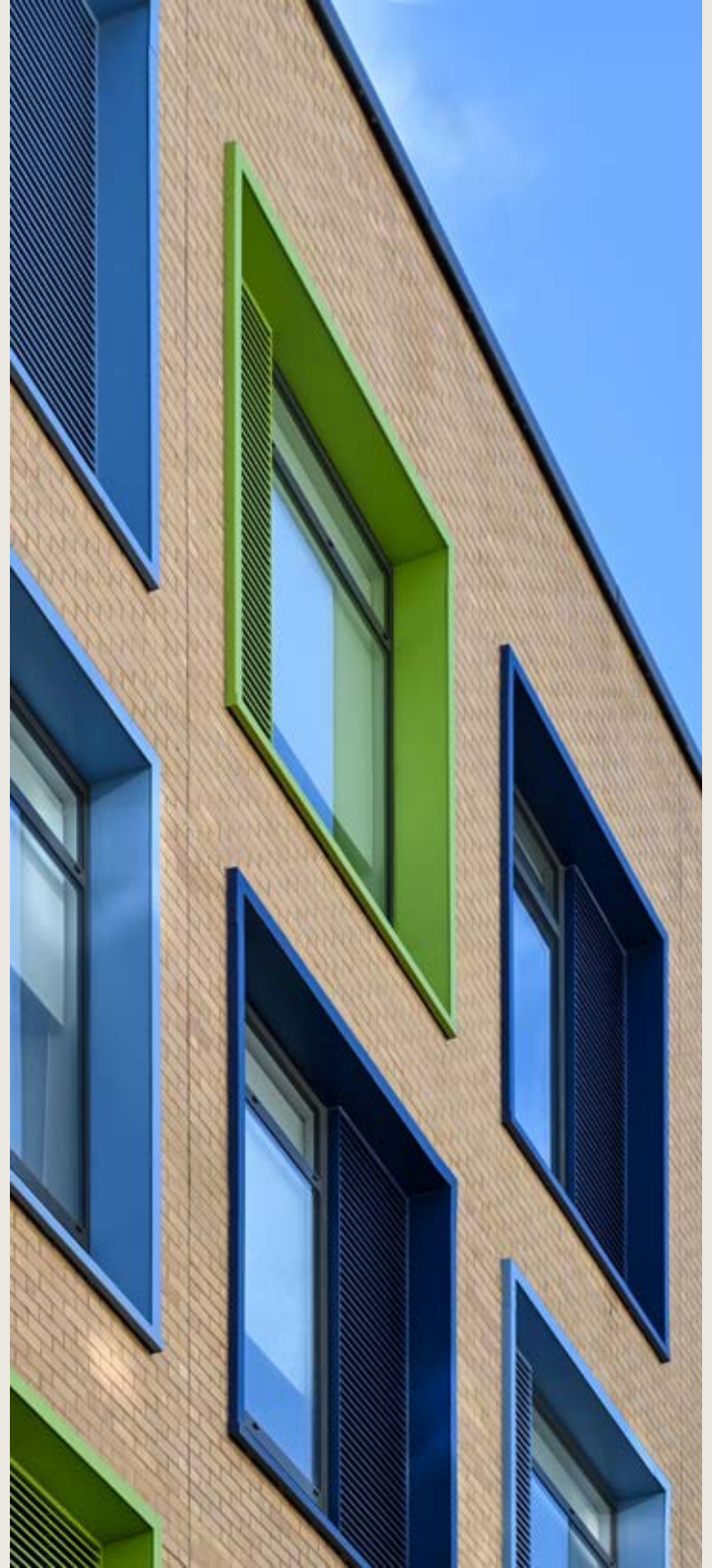
Our close collaboration with clients and design teams fosters a synergy that transforms visions into realities. Every voice is valued, and idea explored.

People-Centric Practice

At the core of our operations is a deep respect for people. Whether it's our clients, team, or the end-users, we prioritise human experiences, ensuring that our spaces resonate with warmth, functionality, and purpose.

Sustainability

Sustainability is an integral part of our design philosophy. We are dedicated to creating eco-friendly designs that minimise environmental impact while maximising utility and aesthetic appeal.



How We Work

Design is central to everything we do.

We bring together the experience of people and the power of technology within a collaborative process.

Many inputs drive design, but context and place-making are central to all the design decisions we make.

With climate change the major challenge facing society, sustainability is a key driver within all our designs. Optimising site orientation with energy conservation and thermal performance are fundamental design drivers, integrating an efficient building fabric with intelligent controls.

We take a 'best value' approach to all design decisions where cost effectiveness stems from good design. The Harris Academy Falconwood is an example of a compact building based on a 'mega block' concept which compresses the plan of the new school building into an elongated cube. The efficient plan means that circulation space is minimised, wayfinding and supervision are made easy, and the building can be economically constructed and maintained.

Feeling safe and secure is fundamental to the operation of all healthcare and education buildings. How the site and building is arranged is key to the creation of a secure environment for users and staff. Discreet secure lines are designed to allow the subtle separation and controlled access between full public, semi-public and private zones.

We believe educational design should not only provide inspiring teaching and learning environments but also places that nurture

personal development, promote respect and ownership whilst improving attainment.

Socialising is an important part of a student's day. With portable devices now commonplace, the learning environment extends to more informal areas of a school or university campus. Designs therefore need to integrate spaces for social interaction and personal study, including internal circulation zones and dining spaces as well as external social and play areas.

Radical new teaching and learning environments are emerging, where personalised learning is replacing traditional class-based teaching. Our West Thornton Primary Academy for the London Borough of Croydon is an example where the Synaptic Trust promotes independent learning at primary school level. Year groups are mixed together within double classroom spaces which feature a series of 'learning sets' throughout the building.



Meet The Team

Management Team



Andy Wiggins
Managing Director



Matt Golds
Managing Director



Daniel Smith
Director



Chris Watts
Director



Alastair Mallet
Technical Director



Giancarlo Pesiri
Design Director



Shena Mathers
Practice Director



Zane Putne
SEND Director

Executive Management Team



Alan Johnson
Director



Ed Keelaghan
Chairman



Ian Hurlstone
Finance Director

Associates



Dan Smith
Associate



Fiona Rogoff
Associate



Mike Terry
Associate



Simon Jolly
Associate



Francesca Bianco
Associate

As designers, social responsibility and collaboration defines what we do.-

Noviun have over 25 years experience in the residential, health and education industry, with specialist knowledge in special educational needs and disabilities (SEND) school design.



Mainstream Education



Giancarlo Pesiri
Design Director

Design Ethos

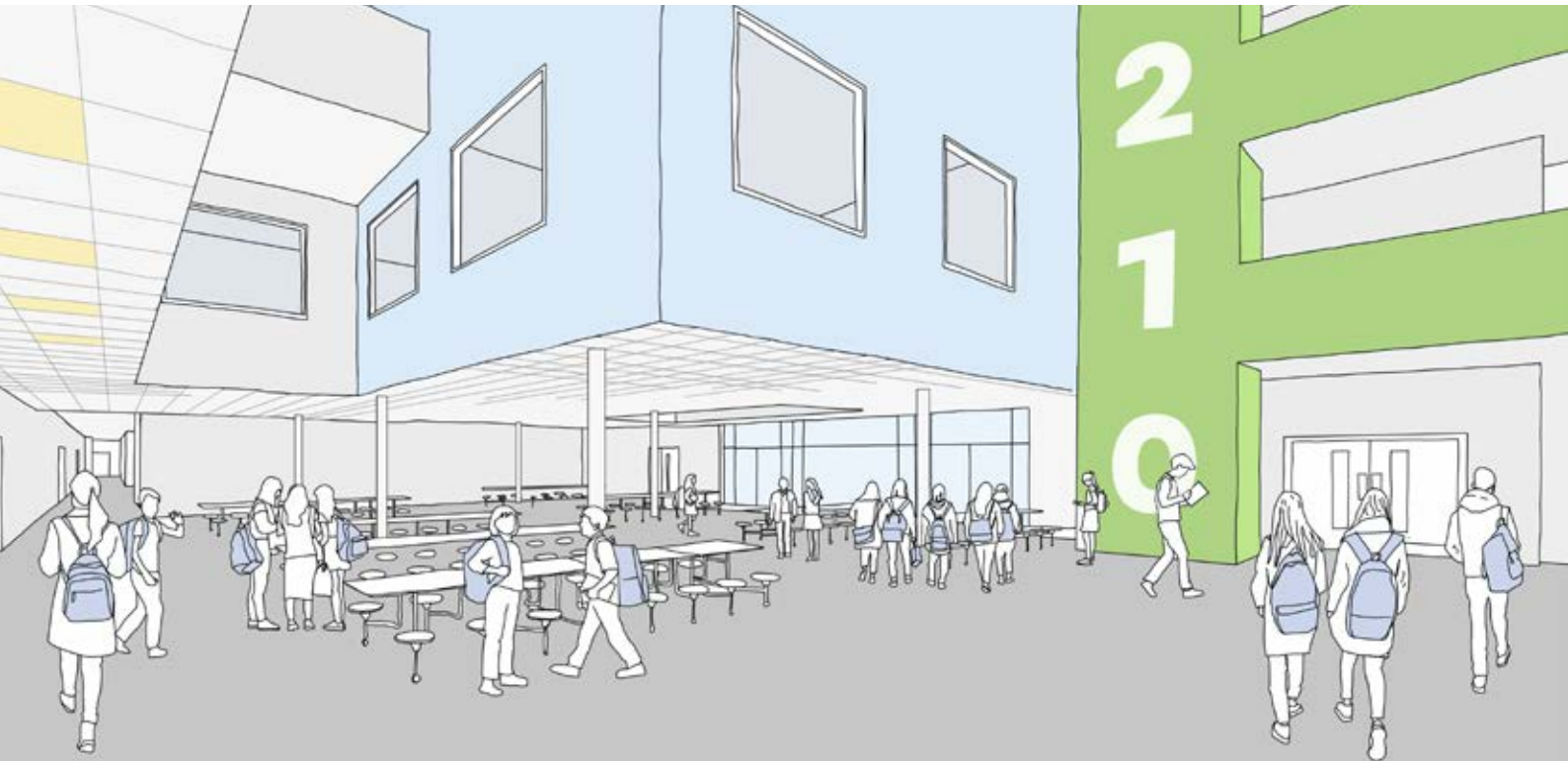
Our background and expertise in the education sector has cultivated a people-centred approach applied across all sectors.

We aspire to positively integrate user experience and human well-being, alongside

the latest technology, to design sustainable spaces that create a positive impact on individuals, communities and the environment. The curation of individual dialogue, into a cohesive architectural narrative, distinguishes each of our projects. Our design process is not pre-determined, but organic responding to our engagement with clients, occupants and stakeholders.

Spatial Equity

Our initiative is to compose creative responses that negotiate the challenges facing our clients, the environment and construction industry.



We are a collaborative team of Architects and Architectural Technologists, that recognise the importance of working with specialists during design, construction and post-occupancy stages. Our leading role and engagement within the multidisciplinary design process ranges from end-users, to subcontractors, delivering spatial experience through high-quality buildability.

Social Impact

We are committed to our role as custodians of the built environment.

We take great care to innovate architectural solutions that endeavour to achieve socially equitable environments, to improve lives and sustain communities. Our conscientious and rigorous post-occupancy evaluation process, disseminates findings from completed projects, for the benefit of future schemes.

Collaborative Learning

As a collective of individual talents, we have a shared ambition to design and deliver for the communities that exist alongside our creations. Our studio environment fosters this aim through regular design and sustainability reviews, focus groups and specialist workshops, to share and learn from each other and the wider industry. Encouraging the coexistence of sketching and physical model making, alongside the latest digital technology, is central to our design process.

Technological Innovation

We integrate the latest digital and computational technologies into our workflows.

To enable effective communication, management and collaboration across multiple disciplines, we continually expand and refine our digital capabilities, foreseeing and responding to



industry challenges and demands. This proactive approach to technology is shared across the practice, with design team members utilising a diverse and evolving collection of construction software.

Research Practice

Our investment in research is sustained by our motivation to respond creatively to the issues of today, while remaining open to new perspectives across the sectors in which we work.

Building on 25 years of industry-leading research and co-creation in design for special educational needs, our investigative method of practice has expanded to engage directly with the challenges of net zero-carbon, digitalisation of the construction industry, advancement of cladding remediation and the potential of MMC.

West Thornton Primary Academy,
Croydon

150+

Primary School
Projects

100k+

Primary School
Places

Building
Bulletin &
Government
Guidance
Advisors





Primary Schools

Freshwater Primary School

Harris Purley Way

West Thornton Primary School

Green Ridge Primary School

Heathfield Primary School

ARK Primary School

Chestnut Primary School

Eden Primary School

Warfield Primary School

Freshwater Primary School

Sector

Primary Schools

Services

Architect & Lead Consultant

Landscape Architect

Principal Designer

Client

DfE

Hampshire County Council

Contractor

Morgan Sindall

Framework

SCF

Value

£3,300,000

Description

Freshwater Primary has accommodated pupils from Yarmouth CofE Primary School and Little Stars Nursery while at the same time retaining the existing Freshwater Early Years Centre. The school provides places for 105 pupils aged between 4 and 11 and also allows additional accommodation should expansion be required in the future up to a maximum of 210 pupils.

The construction of the new school will replace the All Saints CofE Primary School on School Green Road. The site has been used for a school for more than 150 years with the original school building



being constructed in the 1860's.



Harris Purley Way, Croydon

Sector

Primary Schools

Services

Architect & Lead Consultant

Landscape Architect

Principal Designer

Client

London Borough of Croydon

Harris Federation

Contractor

Willmott Dixon Construction

Framework

SCAPE

Value

£13,200,000

Description

Harris Primary Academy is initially opening as a Free- School, with the potential to be a 3 form- entry school in the future.

The challenged faced was to fit this demanding timetable of activities into a very limited amount of accommodation. This was achieved by means of an open plan arrangement where possible, providing built-in flexibility to enable the spaces to be adapted to suit the needs of the users.

Completed in Autumn 2017, the school welcomed 60 Reception children who joined 240 children. The children have a fantastic learning environment inside a bright, airy, modern building which has the latest interactive teaching and learning facilities.





Entrance

City of London
City Hall
City Hall
City Hall

West Thornton Primary School, Croydon

Sector

Primary Schools

Services

Architect & Lead Designer

Client

Synaptic Trust
LB Croydon

Contractor

Farrans Construction

Framework

SCAPE

Value

£11,500,000

Description

West Thornton Primary Academy is a 2 Form Entry primary school catering for up to 420 pupils. The classrooms at the academy have been deliberately oversized to cater for the unique learning environments.

The academy goes away from the traditional desks and chairs approach in favour of having a more flexible, open learning environment, giving pupils the opportunity to learn where they feel best.



The internal teaching facilities has been arranged over three floors to both provide the optimum internal teaching environments whilst maximising the extent of external play space.



Green Ridge Primary School, Buckinghamshire

Sector

Primary Schools

Services

Architect & Lead Consultant

Client

Buckinghamshire CC

Contractor

Framework

DfE HVB Framework

Value

£11,000,000

Description

The school site is on the edge of a new built, large housing estate called Berryfields, in Aylesbury Buckinghamshire. The project is classed as an S106 school and featured in the outline masterplan.

The design responds to the sloping nature of the site, wrapping around the contours to minimise on cut and fill and also utilise the slope for varying platforms, walkways and activities in the playground.



The main hall massing was situated to create an identifiable community building, that looked recognisably different from the surrounding context of housing, but also related with the mix of Trespa, brick and timber.



Heathfield Academy, Croydon

Sector

Primary Schools

Services

Architect & Lead Consultant
Landscape Architect

Client

LB Croydon

Contractor

Willmott Dixon Construction

Framework

SCAPE

Value

£10,000,000

Description

Heathfield Primary Academy was a truly collaborative programme.

The client and community at Heathfield had been badly let down in previous years. The site was partly demolished and the school was in temporary accommodation.

Heathfield Primary Academy won 'Building Project of the Year' at the Constructing Excellence Awards 2018.





ARK Conway Primary School

Sector

Primary Schools

Services

Architect & Lead Consultant
Principal Designer

Client

DfE
LB Hammersmith & Fullham
Turner & Townsend

Contractor

Framework

DfE Contractors Framework

Value

Description

The proposal is for a 1FE primary school which involved refurbishment of the Grade II listed Wormholt Library building and construction of a new two-storey building on a constrained urban site.

Location of the site next to the Westway with major UKPN services running through posed several challenges during the design of the new build including the need for the building to act



as an acoustic barrier, air quality filter and a bridge over the services to avoid significant costs associated with diverting them.

The resulting building form was an elegant and exquisitely detailed two storey building.

The image shows the exterior of a modern school building. The upper level features large windows with teal-colored frames and a dark grey roofline. The lower level is constructed of red brick and has a covered entrance area supported by a blue pillar. The sky is clear blue, and a tree with reddish-brown leaves is visible on the right side of the frame.

ARK CONWAY PRIMARY ACADEMY

Chestnut Primary School

Sector

Primary Schools

Services

Architect & Lead Consultant
Landscape Architect

Client

LB Croydon

Contractor

Willmott Dixon Construction

Framework

SCAPE

Value

£10,000,000

Description

Chestnut Park Primary School in Croydon is one of 23 primary and secondary schools within the GLF Schools group, an academy trust based in the South East.

This £10m scheme includes a rooftop learning deck and is part of the Sunesis Dewey Standardised School design.






Chestnut Park
Primary School

Get into Teaching
with GLF Schools' Teacher Training

Eden Primary School

Sector

Primary Schools

Services

Architect & Lead Consultant

Client

DfE
Eden Primary Trust
Capita

Contractor

Framework

DfE Framework

Value

£4,000,000

Description

Eden Primary was the first new-build school to be delivered under the government's Free School initiative.

The project comprised of a new single form entry primary school including landscaping.

Eden Primary is the vision of Chair of Directors, Peter Kessler, a BAFTA award-winning former TV producer, who wanted to create a Jewish state primary school independent of any synagogue authority, but equally, open to the



wider community, of all faiths and none.

The design has delivered a building and landscape with an organic design, connecting the outside environment with the interior. It has incorporated numerous external access points as well as several distinct outdoor learning and play areas.



Warfield Primary School

Sector

Primary Schools

Services

Architect & Lead Consultant

Client

Bracknell Forest Borough Council

Contractor

WDC

Framework

SCAPE

Value

£3,000,000

Description

Warfield Primary School in Bracknell is part of a Section 106 Agreement and part of a larger development by Berkeley Homes.

The new school is part of the Sunesis Keynes range of Standardised Schools and was built in response to the lack of school spaces in the Berkshire area.

Warfield offers additional school places for up to 420 pupils.





Livingstone Academy, Bournemouth

150+

Secondary
School
Projects

100k+

Secondary
School
Places

Building
Bulletin &
Government
Guidance
Advisors

4

All-Through
Schools

LIVINGSTONE ACADEMY

Lansdowne
Town Centre

COMMUN
ENTR AN
NEW TRAFFIC
REGULATIONS
IN OPERATION





Secondary Schools

Livingstone Academy

Barton Manor School

Chichester Free School

Skinnners Academy Kent

Mayfield School

Hoe Valley School & Woking Sports Box

Hemel Hempstead School

Fulham Cross Academy

Livingstone Academy

Sector

Secondary Schools
All- Through Schools

Services

Architect & Lead Designer
Lead Consultant

Client

Aspirations Trust
DfE

Contractor

Kier Construction

Framework

ESFA HVB Contractors

Value

£28,500,000

Description

A 1510 pupil All-Through School located in the centre of Bournemouth. The project was tendered competitively through the ESFA Contractors Framework.

The scheme includes a large development on a complex urban City Centre site. A mix of a 5 storey new build, Grade II Listed refurbishment of a former Coroners Court and extensive refurbishment of a 4 storey 1960's former Magistrates Court.



With limited external space for the new school to utilise, the design includes multi storey play spaces including a separate MUGA and learning deck within the new build at the third storey. The former multi storey parking deck serving the Magistrates court is being refurbished into a vibrant and engaging primary school play space.



Barton Manor School

Sector

Secondary Schools

Services

Architect & Lead Consultant

Client

DfE
Barton College Trust
Kent County Council

Contractor

Kier Construction

Framework

DfE HVB Framework

Value

£23,000,000

Description

Barton Manor School is our latest scheme developed through the DfE High Value Band Framework.

The project has been developed in conjunction with Kier Construction as one of the latest Free School projects within the UK.

Canterbury has a very historic setting and the negotiations with the planning authority have been key in gaining positive feedback within the design.



Noviun worked very closely with the contractor throughout the ITT to develop a high quality design which sits closely with the project brief.



Chichester Free School

Sector

All- Through Schools

Services

Architect & Lead Consultant
Principal Designer

Client

DfE
Chichester Free School
Farrans

Contractor

Farrans

Framework

Value

£27,500,000

Description

Chichester Free School has been built at the old disused Carmelite Convent in Hunston.

The existing, historically sensitive building was part demolished and extensively refurbished and substantially extended to create a new school big enough for 1,280 students from ages 4 - 19.

The project involved extensive consultation with the local planning authority throughout. Whilst the existing scheme is not listed, the historic



significance led to close scrutiny on the refurbishment and remodelling of the former convent.

The two new wings have been designed to sit sympathetically within the setting of the existing building, with the roofs mimicking the existing building form with a simple, elegant choice of proposed materials.



Skidders Academy

Sector

Secondary Schools
Other Sector (Community)

Services

Architect & Lead Designer

Client

The Skidders Company
Kent County Council

Contractor

Willmott Dixon Constuction

Framework

EFA Framework

Value

£20,000,000

Description

A state of the art three storey secondary academy with four zones that provide a variety of personalised learning space internally and externally.

The 'Heart' space is a 'faceted' Insitu Reinforced Rotunda Concrete Drum which has Glu Lam Beams Structure radiating out to support the ETFE Roof. The outer concentric form, increases in radius as it rises to the upper level, so it's an inclined curved form, taking inspira-



tion from the Guggenheim Museum.

The Heart Space allows open light and quiet learning for the LRC and inside the drum it is an acoustically treated Lecture Theatre. The spaces around the curved form are speciality Science Labs with DT/ Art Room to the top floor and balcony.



Mayfield School

Sector

All-Through Schools
STEAM Schools

Services

Architect & Lead Consultant
Principal Designer

Client

DfE
Portsmouth City Council
Kier Construction

Contractor

Kier Construction

Framework

DfE HVB Framework

Value

£31,000,000

Description

The Mayfield School project was designed via the High Value Band DfE Framework. The process was undertaken within a 6 week design competition.

As an all-through school, a key consideration is designing spaces which pupils of all ages can work together. Corridors and routes were carefully considered internally and externally to ensure the ease of movement around the site.

A particular requirement for the scheme was to



create a facility which enhanced the Schools existing STEAM specialism. A challenging target was to accommodate the STEAM centre on the top floor. Space requirements were tight due to planning restrictions on massing as well as functional challenges such as deliveries and movement of materials.



M Mayfield School
Infant • Junior • Senior

WELCOME

Hoe Valley School & Woking Sports Box

Sector

Secondary Schools
Leisure

Services

Architect & Lead Designer
Principal Designer

Client

Woking Borough Council
DfE
Freedom Leisure

Contractor

Willmott Dixon Construction

Framework

SCAPE

Value

£40,000,000

Description

Woking Sports Box is a new state of the art sports and leisure facility for the Woking Borough Council and run by Freedom Leisure. The facility includes an 80 station gym, 2 fitness studios, multi-functional sports hall, grass and 3G pitches, 400m athletics track and café.

The project in Egley Road is the only gym located in Woking to offer full TechnoGym Wellness System facilities. The gym will cater for all ability levels including wheelchair accessible bikes, seated cross trainers and Olympic lifting platforms.



Freedom Leisure General Manager Geo Castro said: "Woking Sportsbox is a high end yet affordable leisure facility for the whole of the Woking community. We will have state-of-the-art TechnoGym and Octane kit in our gym, but while it will be top of the range it will also be inclusive!"

Woking Sports Box is built adjacent to our Hoe Valley School project on Egley Road on Woking's Green Belt.



Hemel Hempstead School

Sector

Secondary Schools

Services

Architect & Lead Designer

Client

The Hemel Hempstead School
DfE

Contractor

Tilbury Douglas

Framework

DfE Construction Framework

Value

£11,000,000

Description

Noviun are delighted to be working with Tilbury Douglas on a new Secondary School building for the Hemel Hempstead School.

The new building on the existing site of the school will include provisions for new Class-rooms, Staff Offices, DT Workshops, and Art Rooms.

The new building occupies a prominent position on site along the central north-south axis, reinforcing this as the main pupil route be-



tween buildings.

The new build position facing the original and dominant existing Main Block better defines the top playing field by framing and enclosing this space, creating a new external quadrangle.

The 3-storey new build replaces four single-storey blocks and two 2-storey blocks with a more efficient building footprint, creating a net gain in external spaces.



Fulham Cross Academy

Sector

All-Through Schools
STEAM Schools

Services

Architect & Lead Consultant
Principal Designer

Client

DfE
Tilbury Douglas
London Borough of Hammersmith and Fulham

Contractor

Tilbury Douglas

Framework

DfE Framework

Value

£10,000,000

Description

Fulham Cross Academy (FCA) is a secondary school with sixth form, with a STEM (Science, Technology, Engineering, and Mathematics) curriculum focus, catering for students aged 11 to 19 years. The school has a capacity for 800 pupils.

The key design drivers for the proposed landscape works are the seamless integration of the new building into the existing site, whilst enhancing the sports provision, social areas and biodiversity and meeting requirements for



planning.

Students are taught to be innovative and find solutions to real life challenges, which are authentic, applicable and actionable, allowing them to flourish beyond the school environment.

The schools commitment to STEM learning transforms conventional education whilst boosting confidence and employability.



Fulham Cross
Academy



SEND Education



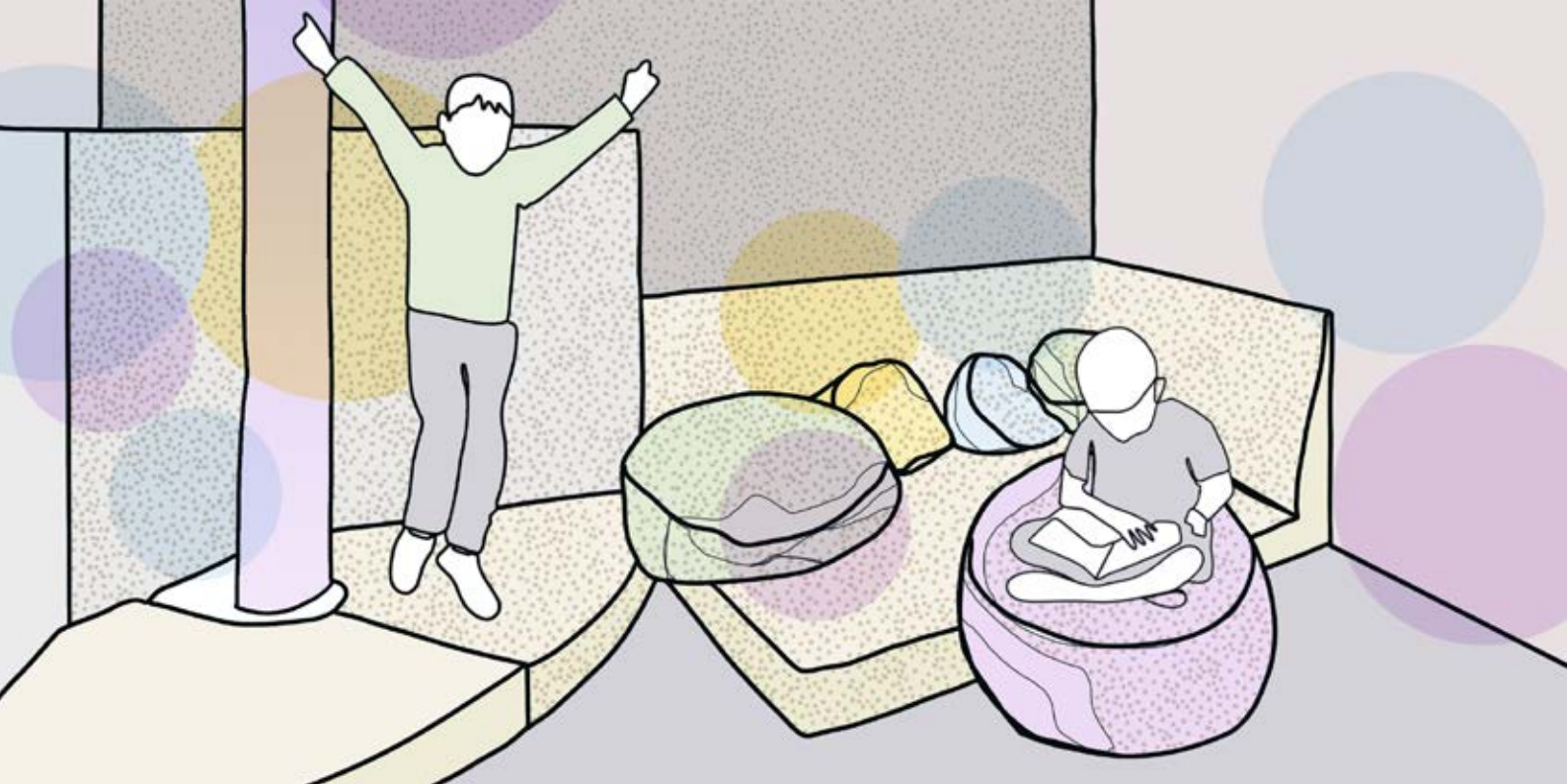
Zane Putne
SEND Director

Experience & Expertise

Noviun are seen as market leaders in the SEND sector and have an extensive portfolio of over 75 innovative Special Educational Needs and Disabilities Schools, many of which have won awards for their design and educational impact.

Over the last 25 years we have been involved in a wide spectrum of projects such as The Avenue School, which combined a SEND school, community facilities and office facilities within one building. It was a scheme which was cross funded by the development of a new residential area on the surplus site area.

Another example is Daventry Hill School, developed to the latest Building Bulletin 104 guidance and caters for 175 pupils aged 4-18 with a range of profound and multiple difficulties, severe learning difficulties and autistic spectrum disorder. This project included community access to the 'heart' spaces and hydrotherapy pool.



Concept

We believe that each educational project is unique and deserves thorough attention, placing not only pupils but also staff and visitors at the centre of the design, creating imaginative and sophisticated learning spaces that suit the needs of all building users. A strong concept can often create a vision for the scheme that all stakeholders can look forward to being completed.

Inclusion

We have designed some of the most innovative and inclusive models to be found in the UK. One example is our Gillingstool & New Siblands scheme in Gloucestershire, where mainstream and SEND Primary are housed within a single building. This allows inclusion to be introduced slowly over a few of years. We have also been involved in The Manor Green Special Needs Schools at Crawley were established as a partnership between the DfE, West Sussex County Council and Noviun. They were a pilot for the first truly inclusive educational campus in the UK, in conjunction with an existing mainstream primary school and a later built secondary school.

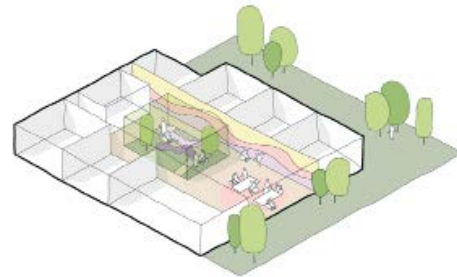
SEND Design Guide

Noviun has created a SEND design guideline, which records a series of key design issues and solutions that we believe will benefit both current and future generations of SEND designers. Noviun as a practice has always specialised in the education sector, however, a particular specialism in SEND developed from the earliest days by being involved in a

Department for Education pathfinder scheme. The scheme came about to assess how special needs schools could be integrated into a mainstream education campus. Establishing a detailed knowledge of individual disabilities and how best they could be accommodated within a school environment, has led to cutting-edge SEND schemes, making the practice a leading national expert in the field.



SEND Design Guidelines



NOVIUN
ARCHITECTS

Daventry Hill School Daventry

75+

SEND School
Projects

10k+

SEND School
Places

Building
Bulletin &
Government
Guidance
Advisors

4

Fully Inclusive
School
Campuses





SEND Schools

The Beeches AP School

Pinn River SEND School

Yeoman Park Academy

Addington Valley School

Brookwood School

Samuel Cody SEMH School

Grand Union Village School

Austen Academy

Daventry Hill School

Quest Academy

Futures Academy

Forest Way School

The Beeches AP School

Sector

SEND Schools

Services

Architect & Lead Designer
Principal Designer

Client

DfE
Medway Borough Council

Contractor

Framework

DfE Framework

Value

£5,000,000

Description

The Beeches School is an Alternative Provision School located in Medway Kent, adjacent to an existing successful AP School, The Rowans.

The proposal is for a 50 place school, for pupils aged 4-14 who would come to the school on a temporary basis to help re-establish them back into mainstream education, or alternatively SEND provision.

The number of places at The Beeches will be divided into key stages, with classes of pupils



able to accommodate up to eight children at any one time. Key stage 1 will have capacity for 8 pupils. Key stage 2 will have capacity for 18 pupils (classes designed for a maximum of 8 pupils but numbers will fluctuate). Key stage 3 will also have capacity for 24 pupils. There will be a need to be flexible on these numbers as statistics show that the figures change year on year.



Pinn River SEND School

Sector

SEND Schools
All-through School

Services

Architect & Lead Designer

Client

DfE
Kier Construction

Contractor

Kier Construction

Framework

DfE Framework

Value

£16,000,000

Description

Pinn River SEND School will be a 180-place all-through SEND school, to cater for pupils with severe and profound learning difficulties including autism and multiple sensory impairments, operated by The Eden Academy Trust.

The site is currently occupied by two existing schools; Grangewood School, a primary school for children with a range of learning disabilities. Grangewood School is run by The Eden Academy Trust, which runs five special needs



schools, that meet the needs of children with moderate (MLD) and severe (SLD) learning difficulties.



Pinn River
School

Yeoman Park Academy

Sector

SEND Schools
All-through School

Services

Architect & Lead Designer

Client

DfE
Gleeds
BAM Construct

Contractor

Framework

DfE HVB Framework

Value

£16,000,000

Description

Yeoman Park Academy is a replacement building for the existing all-through existing school. The new building accommodates for 138 pupils with a wide range of needs, including profound multiple learning difficulties (PMLD), severe learning difficulties (SLD) and autism (ASC).

The building and site have been designed to ensure each age cluster have their own area, which is directly linked to the external areas. This includes a sixth form at first floor level



with its own external terrace, benefiting pupils' independence and wellbeing.

The design was developed in close consultation with the school to ensure all pupils' needs are met and learning support with associated sensory areas are close to the class bases. Each wing of the building has its own character to help pupils orient themselves within the site.



Addington Valley School

Sector

SEND Schools

Services

Architect & Lead Designer
Principal Designer

Client

LB Croydon
Department for Education
Mott Macdonald

Contractor

Kier Construction

Framework

DfE HVB Framework

Value

£14,000,000

Description

Addington Valley Academy is located on Field Way in London Borough of Croydon (LBC). The proposed new school building is located on the site currently used by Timebridge Community Centre, which is currently being rebuilt adjacent to the proposed school site.

The site has residential properties to South East and is bordered by green fields, which are part of Metropolitan Green Belt to the North and West with the new, re-built Community Centre being proposed East of the site.



The proposal is to develop an all through, co-educational special education needs (SEND) School for 150 pupils aged between 2-19 predominantly with a wide range of learning difficulties some of which with Autistic Spectrum Disorder (ASD) or moderate learning difficulties.



Brookwood School

Sector

SEND Schools

Services

Architect & Lead Designer

Principal Designer

Sub Contracted Design Team

Client

Woking Borough Council

Surrey County Council

Contractor

Framework

DfE Framework

Value

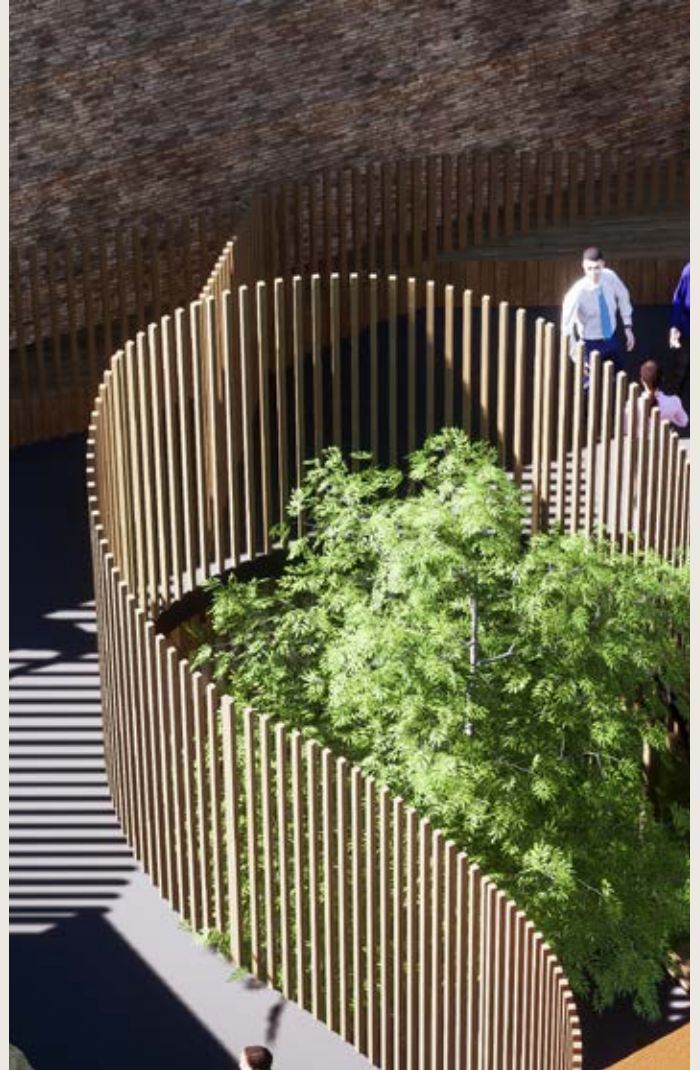
£25,000,000

Description

A new SEND School for up to 200 pupils aged 4 to 16 who predominantly have a diagnosis of Autism or Social Communication and Social Interaction needs (CSCN).

The new school will have teaching spaces for early years, primary and secondary school levels. The size of the school building and site meets the DfE area standards set out in Building Bulletin 104.

The site is part of the Green Belt and is



bounded by an area proposed as an extension Suitable Alternative Natural Green space (SANG) area.



Samuel Cody SEMH School

Sector

SEND Schools

Services

Architect & Lead Designer

Client

Hampshire County Council

Contractor

Framework

DfE HVB Framework

Value

£16,000,000

Description

Yeoman Park Academy is a replacement building for the existing all-through existing school. The new building accommodates for 138 pupils with a wide range of needs, including profound multiple learning difficulties (PMLD), severe learning difficulties (SLD) and autism (ASC).

The building and site have been designed to ensure each age cluster have their own area, which is directly linked to the external areas. This includes a sixth form at first floor level



with its own external terrace, benefiting pupils' independence and wellbeing.

The design was developed in close consultation with the school to ensure all pupils' needs are met and learning support with associated sensory areas are close to the class bases. Each wing of the building has its own character to help pupils orient themselves within the site.



CODY OAKS

Grand Union Village SEND School

Sector

SEND Schools
All-through School

Services

Architect & Lead Designer

Client

DfE
Gleeds
BAM Construct

Contractor

Framework

DfE HVB Framework

Value

£16,000,000

Description

Yeoman Park Academy is a replacement building for the existing all-through existing school. The new building accommodates for 138 pupils with a wide range of needs, including profound multiple learning difficulties (PMLD), severe learning difficulties (SLD) and autism (ASC).

The building and site have been designed to ensure each age cluster have their own area, which is directly linked to the external areas. This includes a sixth form at first floor level



with its own external terrace, benefiting pupils' independence and wellbeing.

The design was developed in close consultation with the school to ensure all pupils' needs are met and learning support with associated sensory areas are close to the class bases. Each wing of the building has its own character to help pupils orient themselves within the site.



Austen Academy

Sector

SEND Schools

Services

Architect & Lead Designer
Principal Designer
Landscape Architect

Client

DfE
Hampshire County Council

Contractor

Framework

DfE HVB Framework

Value

£10,000,000

Description

The development of Chineham Primary School will form the Austen Academy, a 125 place all-through special needs school with associated car park, play areas and sports facilities.

The school, once fully operational, will cater for pupils aged between 4 and 16 years, with a planned start-up in Easter 2021.





The
Austen
Academy

Daventry Hill School

Sector

SEND Schools

Services

Architect & Lead Consultant
Principal Designer

Client

DfE
Daventry Hill School

Contractor

Framework

Design and Build

Value

£13,000,000

Description

Daventry Hill School caters for 175 pupils, aged 4 - 18 with PMLD, SLD and ASD.

The steeply sloping and constrained site posed a challenge for a school of this size and with such exacting requirements. From the main entrance visitors are able to access the reception and cafe area which serves as an interface between public and pupils. The 2-storey design expands outwards and into the site as two wings either side of a double height and central space which forms the secure heart



and learning areas of the school.

On completion, the project gained recognition for its inspiring school design. This was due partly to its innovation of dealing with a sensitive mixed use development.



Quest Academy

Sector

SEND Schools

Services

Architect & Lead Designer
Principal Designer

Client

DfE

Contractor

BAM Construction

Framework

Regional Framework

Value

£6,000,000

Description

The Quest Academy includes spaces for 80 pupils comprising of 10 new classrooms from KS2 up to Sixth Form. The academy also includes playing fields and other sports facilities.

The project caters to social emotional mental health (SEMH) needs as well as specialist subjects such as art, science, IT, and design technology. A small sports hall and dining rooms form the shared spaces of the school, the level of inclusion needed was thoroughly considered



during the design process of this school due to the sensitive nature of both a SEND and SEMH school.

An open Cafe also gives space for interaction with the local community.



Futures Academy

Sector

SEND Schools
All-through School

Services

Architect & Lead Designer

Client

DfE
Orchard Hill College and Academy Trust

Contractor

Framework

DfE HVB Framework

Value

£16,500,000

Description

The Futures Academy project was designed via the High Value Band DfE Framework. The process was undertaken within a 6 week design competition.

As an all-through SEND school, accommodating 246 pupils with wide range of learning difficulties, including MLD and ASD. Key consideration was providing pupils with high quality spaces both internally and externally in a constrained site. Wayfinding and sensory journey were carefully



considered to provide ease of movement around the building and site with clear reference points, which are important for SEND environments.



The Futures
Academy

Forest Way School

Sector

SEND Schools

Services

Architect & Lead Consultant

Client

Leicester County Council

Contractor

Framework

Bespoke Contractor Framework

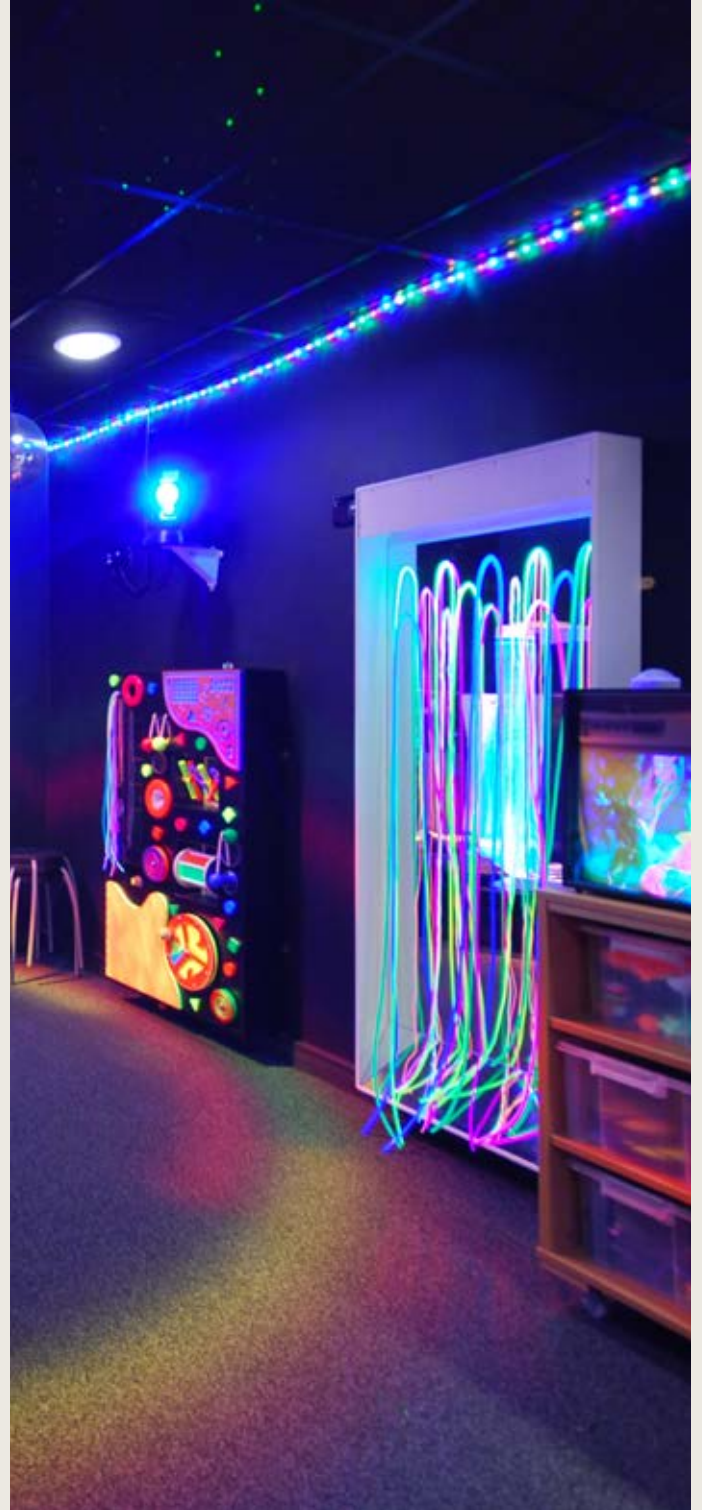
Value

£9,000,000

Description

The design of Forest Way sought to integrate the school with the topography, embracing the surroundings and drawing the woodland landscape in the project wherever possible. Nature, natural materials and, indeed, sustainability have all been principal considerations in the development of the scheme.

Following its completion, the project was nominated for a number of high profile awards with its culmination being reaching the final top 10 in the World Architecture Awards.





St Georges University Jenner Wing, Merton

150+

Primary School
Projects

100k+

Primary School
Places

Building
Bulletin &
Government
Guidance
Advisors

6

Up to six
storeys
in height

UPDATE STATS





Further / Higher Education

Harris Rainham Sixth Form

St Georges University - Jenner Wing

St Georges University Library

Portsmouth University

Holyport College

Bournemouth and Poole College

Harris Rainham Sixth Form

Sector

Higher Education

Services

Architect & Lead Consultant
Landscape Architect
Principal Designer

Client

DfE
ISG

Contractor

ISG

Framework

Value

£16,000,000

Description

A new build 400 pupil Sixth Form designed within a tight urban site in Rainham. The scheme was developed in close collaboration between Noviu, Harris Federation and the Department for Education.

The site includes a large number of complexities, including developing within the Green Belt. Noviu led the planning process working with the Local Authority to develop the detailed design and gain full planning approval follow design panel review



and committee approval.

The project is developed to Net Zero Carbon in Operation and is constructed within an MMC CLT/SIPS approach.



**HARRIS
RAINHAM
SIXTH FORM**



St Georges University Jenner Wing

Sector

Higher Education

Services

Principal Designer
Employers Agent

Client

St Georges University Hospital

Contractor

Framework

Value

£6,000,000

Description

Working closely with the estates and facilities team, the refurbishment of the 1970's existing Jenner Wing building gives St George's University a step change in the way they use their research facilities. Organisational restructuring and developing with minimal disruption to the University were key considerations.

The scheme provides high-tech laboratories and flexible office space with an infusion of natural light and open spaces. Utilising the existing building fabric, the end result was an uplifting and popular space.





Portsmouth University

Sector

Higher Education

Services

Architect & Lead Consultant

Client

University of Portsmouth

Contractor

Kier Construction
Morgan Sindall

Framework

SCAPE

Value

£30,000,000

Description

The new facility provides new lecture theatres, labs and a social foyer area at the front providing a contemporary architectural solution to the 1970's interior whilst catering for innovative teaching methods by the Faculty of Biological Science and Psychology.





St Georges University Library

Sector

Higher Education

Services

Architect & Lead Designer
Employers Agent

Client

St Georges University Hospital

Contractor

Framework

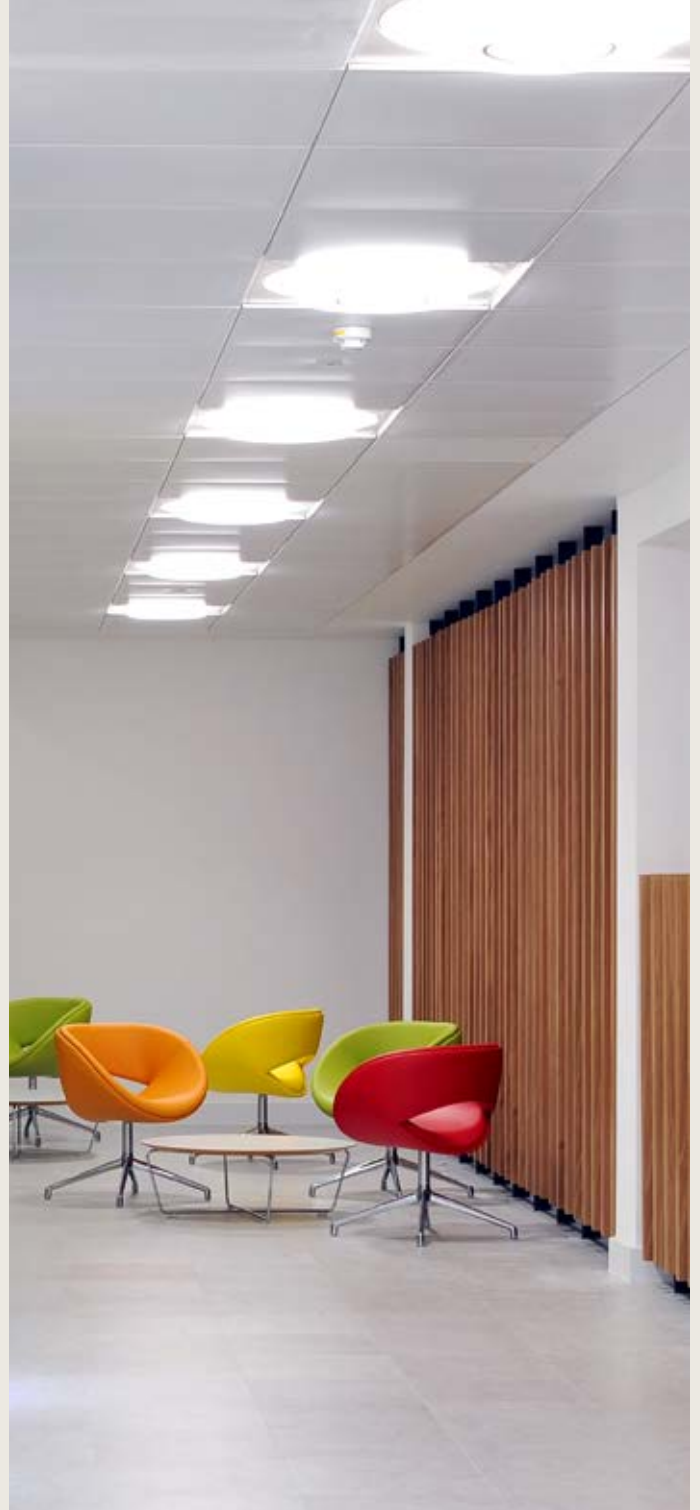
Value

£2,000,000

Description

This project included the full strip out and refurbishment of an existing 1970's building within the SGU Campus. A key consideration throughout the development of the project was to use the SGUL corporate branding and image within the forefront of design approach.

The design focused on technical and resource excellence for students in an exciting and vibrant SGUL branded environment. The refurbishment successfully deals with the high volume of people using the facility and includes a cafe at its heart.





East London Arts and Music (ELAM)

Sector

Higher Education

Services

Architect & Lead Consultant

Client

London Borough of Tower Hamlets
ELAM

Contractor

Farrans Construction

Framework

LHC Framework

Value

£10,000,000

Description

East London Arts & Music (ELAM) is a free school sixth form located in Bow, East London, for students aged 16 to 19 who wish to pursue a career in music or digital media. The design brief for the new accommodation was to produce a statement building with state of the art facilities for both the school and the community it serves.

The site provided a number of challenges, being bordered by Network Rail to the north and the A12 to the west. There are also a number of



easements crossing the site.

The design solution incorporates a ground floor suite of 'industry standard' recording studios and entrance foyer, with the first and second floors providing a 400 seater performance / auditorium space, supported by administration, café and general teaching rooms. The now completed building is a major addition to London's specialist music teaching and performance venues.



ELAM

Holyport College

Sector

Higher Education

Services

Architect & Lead Designer

Client

Hollyport Free School
Education Funding Agency
Turner 7 Townsend

Contractor

Willmott Dixon Construction

Framework

Value

£15,000,000

Description

The design concept developed through detailed consultation with the Client group, which included expertise from Eton College and other local authority teaching establishments, in addition to national expertise on educational and dormitory design.

The design allows for day and boarding pupils to mix freely while providing high quality teaching in smaller class sizes of twenty, in a total scheme area of 9090sqm gross internal.



The scheme organises the new and existing buildings around a series of quadrangles, similar to the approach taken at Oxbridge Universities.



Bournemouth and Poole College

Sector

Higher Education

Services

Architect
Principal Designer

Client

DfE

Contractor

Kier Construction

Framework

Value

£25,000,000

Description

The Bournemouth and Poole College (B&PC) is a large (12,000 students) general further education college that provides a wide range of courses across a variety of curriculum areas. It is the largest provider of further education and apprenticeships in the area.

The project forms part of a wider estates strategy to consolidate the College on to two main sites:

- Lansdowne Road site in Bournemouth (the application site);



UPDATE TEXT



- North Road site in Poole

The Lansdowne campus is located within the heart of Bournemouth town centre and currently operates across a series of single to four-storey buildings, some of which are Grade II listed and are defining structures within the context of the Lansdowne area.



Sustainability



Mike Terry
Associate Architect
Sustainability Lead

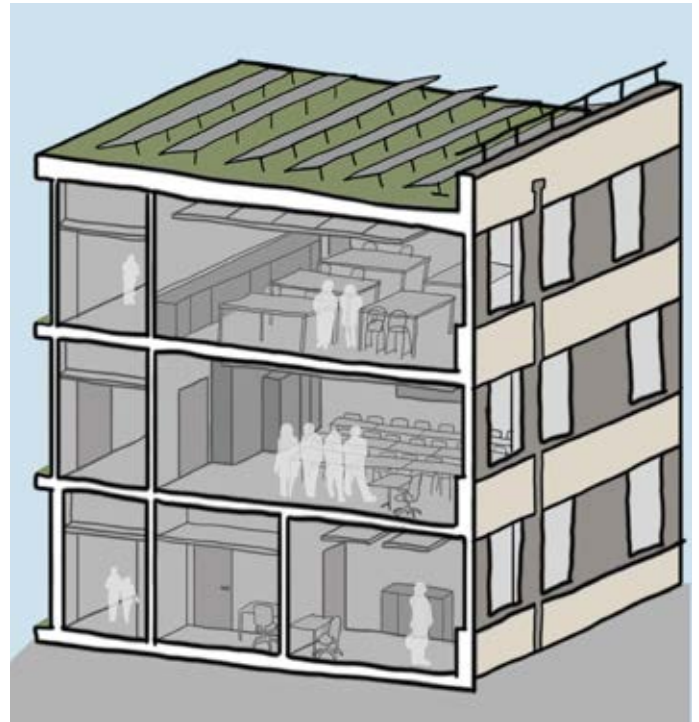


At Noviun, we are committed to integrating sustainable practices into every aspect of our architecture practice. Our approach to sustainability is guided by a comprehensive policy designed to achieve several key principles. The 'NOW' group aims to ensure these principles are being met and helps to keep Noviun informed with the latest sustainability updates within the industry.

Sustainability Toolkit

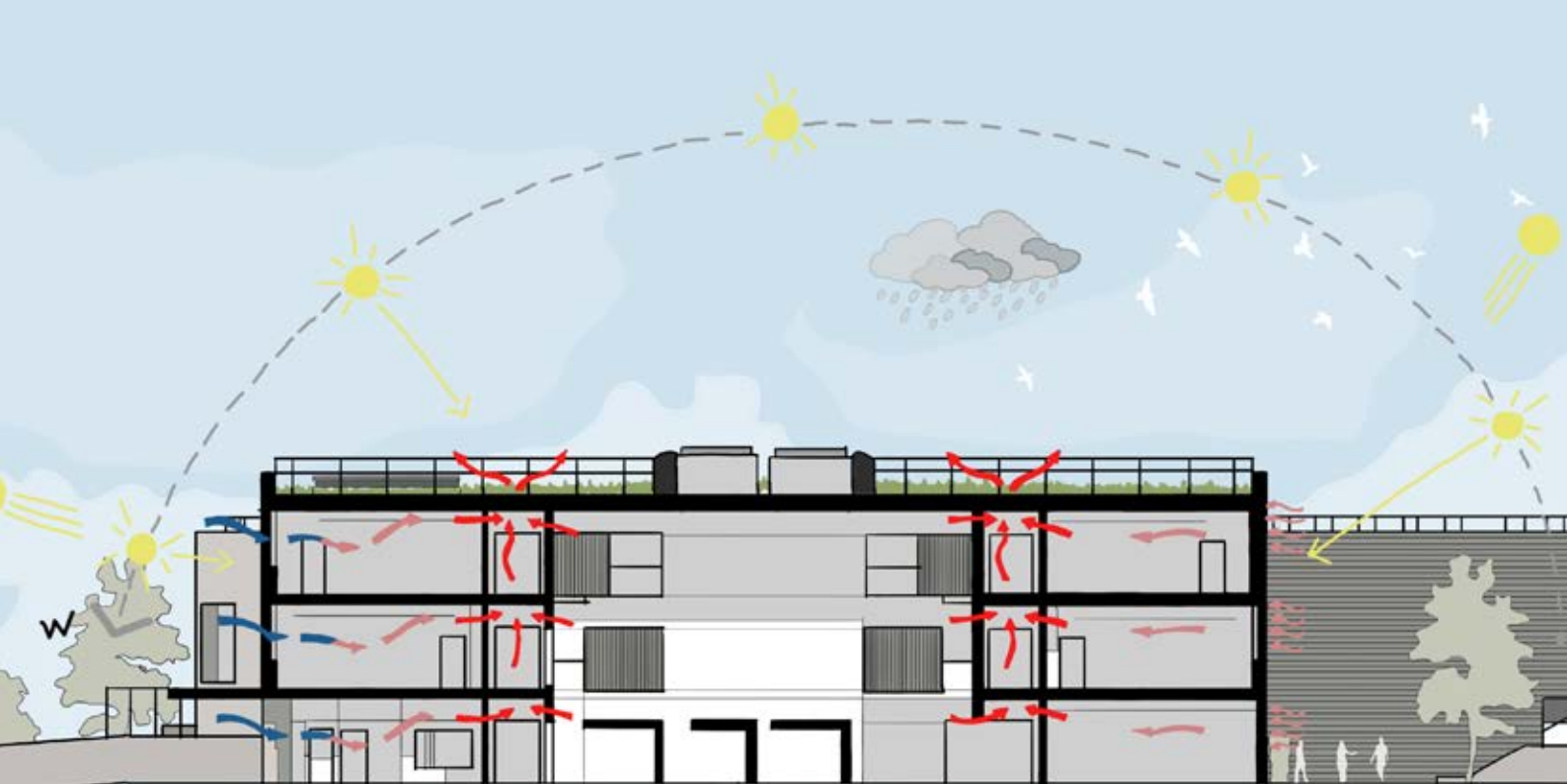
We have developed the 'Noviun Sustainability Toolkit', a practical tool to guide and track key sustainability related decisions and data throughout a project. It is not only useful for individual schemes, each Toolkit is also linked to a Masterfile to allow us to learn from and improve our designs across the practice.

The Toolkit is a prompt and management tool which has been created using the latest guidance and requirements from the RIBA's Plan of Work Sustainability Strategy Detailed Tasks Sustainability Outcomes Guide. We use it within the office to inform our design process and share it with the Client, Design and Contractor Teams as a focus to prompt timely decisions and manage the Golden Thread of sustainable design. As well as enabling



and documenting successful outcomes, our Sustainability Toolkit is also used to identify where we are not achieving sustainability targets, whether this can be rectified and any required mitigation measures.

The Toolkit is designed to be simple and concise and has 3 main sections; a front page with relevant project data and headline features; the Sustainability Outcomes Data section which centrally locates initial design targets through to in use data; and the RIBA Stages. Information is provided from across the Design Team, including Operational and Embodied Carbon, Water Use, Transport, Ecology and Lifecycle Costs.



Healthy & Safe
Environments



Functionality



Long Lasting



Sustainable
Design &
Construction



Futute Proof

BIM Expertise



Alex Beeching
BIM Coordinator

At Novium, we take immense pride in our expertise in Building Information Modeling (BIM) and our unwavering commitment to adhering to the ISO 19650 standards. BIM is a transformative process that empowers architects and design professionals to create and manage complex building projects with greater precision, efficiency, and collaboration. Through our adept utilization of BIM methodologies, we have consistently delivered exceptional results, setting new benchmarks in the industry.

The BIM Process

The BIM process is fundamentally based on the creation, sharing, and management of digital information throughout a building project's lifecycle. From the early stages of concept development to the construction phase and beyond, BIM acts as a central repository of data, encompassing geometric models, detailed specifications, and integrated performance data. Our team at Novium leverages this process to achieve a holistic understanding of the project, enabling us to make informed decisions and minimize potential clashes and conflicts, thus reducing rework and costs.

Information Management

A pivotal aspect of our expertise lies in Information Management within the BIM ecosystem. We follow the ISO 19650 standards meticulously, ensuring that all project stakeholders have access to relevant, accurate, and up-to-date information. Our streamlined approach to Information Management optimises collaboration and transparency among architects, engineers, contractors, and clients. This results in enhanced coordination, reduced errors, and accelerated timelines.

Advanced BIM Technologies

At Novium, we employ industry-leading BIM software and platforms, enabling us to generate detailed models and facilitate data exchange efficiently. Our proficiency in BIM extends to clash detection, clash resolution, and 4D simulations, empowering us to anticipate and mitigate potential conflicts before they escalate into costly on-site issues. Additionally, our expertise in BIM facilitates effective communication with clients, offering clear visualizations that enhance their understanding of the design intent and foster more informed decision-making.

Proven Track Record

Throughout the years, we have demonstrated our proficiency in implementing BIM methodologies across diverse architectural projects, ranging in scale and complexity. Our continuous dedication to advancing BIM technologies and Information Management sets us apart as pioneers in the field, bolstering our position as a reliable partner for all architectural endeavors.

“Particular credit is due to our project team who have worked with Barton Court Academy Trust, the DfE and the construction company Kier to create this fantastic new building.”

- Shellina Prendergast, KCC’s cabinet member for education



The Studio

Since our founding in 1997, we have grown from a small office within a Hospital to 30+ architectural professionals in the heart of Chichester.

We are an architectural practice built around its people. This is evidenced by having staff working with us for 10, 20 and 30+ years and we continue to grow and take on new members of staff each year, including throughout the pandemic, which has been a challenging time within the industry.

Academic

Community involvement is a big part of our agenda. We help to inspire children and the next generation of architects by visiting local schools and holding open evenings for university students.

Noviun are also now a proud part of the RIBA Student Mentoring programme, taking on many work experience students and students from universities looking to study for a career in Architecture.

Over the years we have sponsored many of our current staff in furthering their education and qualifications whilst working with us.

Helping those members of staff to become fully qualified architects and technologists, whilst developing their skills and experience in a real-world situation, benefits the individuals, our practice and the industry as a whole.

We are proud to say over 70% of the current practice have had some or all of their academic development sponsored and mentored through Noviun.

Social

Over the years we have been involved in many events that raise money for charity from Jeans for Genes to Children in Need. We are also proud to support our local community and have recently volunteered at the Ferring Country Centre to paint their riding school.

We are delighted to announce that we were awarded the SME of the Year at the 2020 SECBE Constructing Excellence Awards.

The Constructing Excellence Awards set out to recognise the outstanding built environment companies and projects that have delivered improvements in all-round performance through collaborative working and a real desire to make a difference.

“Noviun have shown that they are a forward thinking business with strong work ethic and values putting people at the forefront. They’ve seen major growth and increased turnover in recent years showing best practice with their supply chain.”

- Helen Patel, Employer Engagement Manager at the Chartered Institute of Building



Awards

South Coast Property Awards 2024

Winner Regeneration and Retrofit - Livingstone Academy Bournemouth

Inside Housing Development Awards 2023

Best Affordable Housing Development less than £20m - Kelso Cochrane House

SPACES Awards 2022

Nominated Civic Building of the Year - Dukes Court

Education Estates Awards 2021

Shortlisted for Architectural Practice of the Year

SECBE Awards 2020

SME of the Year

South Coast Property Awards 2019

Architectural Practice of the Year

Education Estates Awards 2019

Shortlisted for Architectural Practice of the Year

Education Estates Awards 2019

Innovation In Teaching and Learning - West Thornton Primary Academy

Education Estates Awards 2019

Inspiring Learning Spaces - West Thornton Primary Academy

Education Estates Awards 2019

Project of the Year - Chichester Free School

SPACES Awards 2019

Best Educational New Build - Chichester Free School

Sussex Heritage Awards 2019

Highly Commended Public and Community Building - Chichester Free School

SECBE Awards 2019

Shortlisted for People Development

South Coast Property Awards 2018

Nominated for Architectural Practice of the Year

Spaces Awards 2018

Nominated for Civic Building of the Year - ELAM

As a practice we pride ourselves on our

25 years experience
SEND specialist design
Practice of the Year Award
500+ completed projects
Multi-sector experience
Use of innovative technology



NOVIUN ARCHITECTS

Matt Golds



(01243) 558762
(+44) 789 660 2911



m.golds@noviun.com



Corn Exchange, Baffins Lane, Chichester,
PO19 1BF

For more information:
noviun.com
info@noviun.com